

HOLICK ADDITION NO. 3

D/R 151/109
SCALE 1"=100
OCT., 1951

Curve	Δ	Angle	Radius	Tangent	Long Chord	Arc
1	75°55'	~32.05'	25'	39.42'	~42.47'	
2	86°53'	~26.40'	25'	36.30'	~40.03'	
3	89°47'	~25.15'	25'	35.50'	~39.41'	
4	40°50'	~67.16'	25'	46.86'	~47.85'	
5	122°49'	~27.25'	50'	47.86'	~58.41'	
6	57°11'	~45.87'	25'	43.89'	~45.76'	
7	107°28'	~22.01'	30'	35.50'	~41.28'	
8	72°32'	~34.10'	25'	40.34'	~43.17'	
9	89°45'	~25.11'	25'	35.44'	~39.33'	
10	90°15'	~24.89'	25'	35.26'	~39.18'	
11	89°45'	~25.11'	25'	35.44'	~39.33'	
12	90°15'	~24.89'	25'	35.26'	~39.18'	
13	107°28'	~22.01'	30'	35.50'	~41.2'	
14	72°32'	~34.10'	25'	40.34'	~43.17'	

53.46
19.67

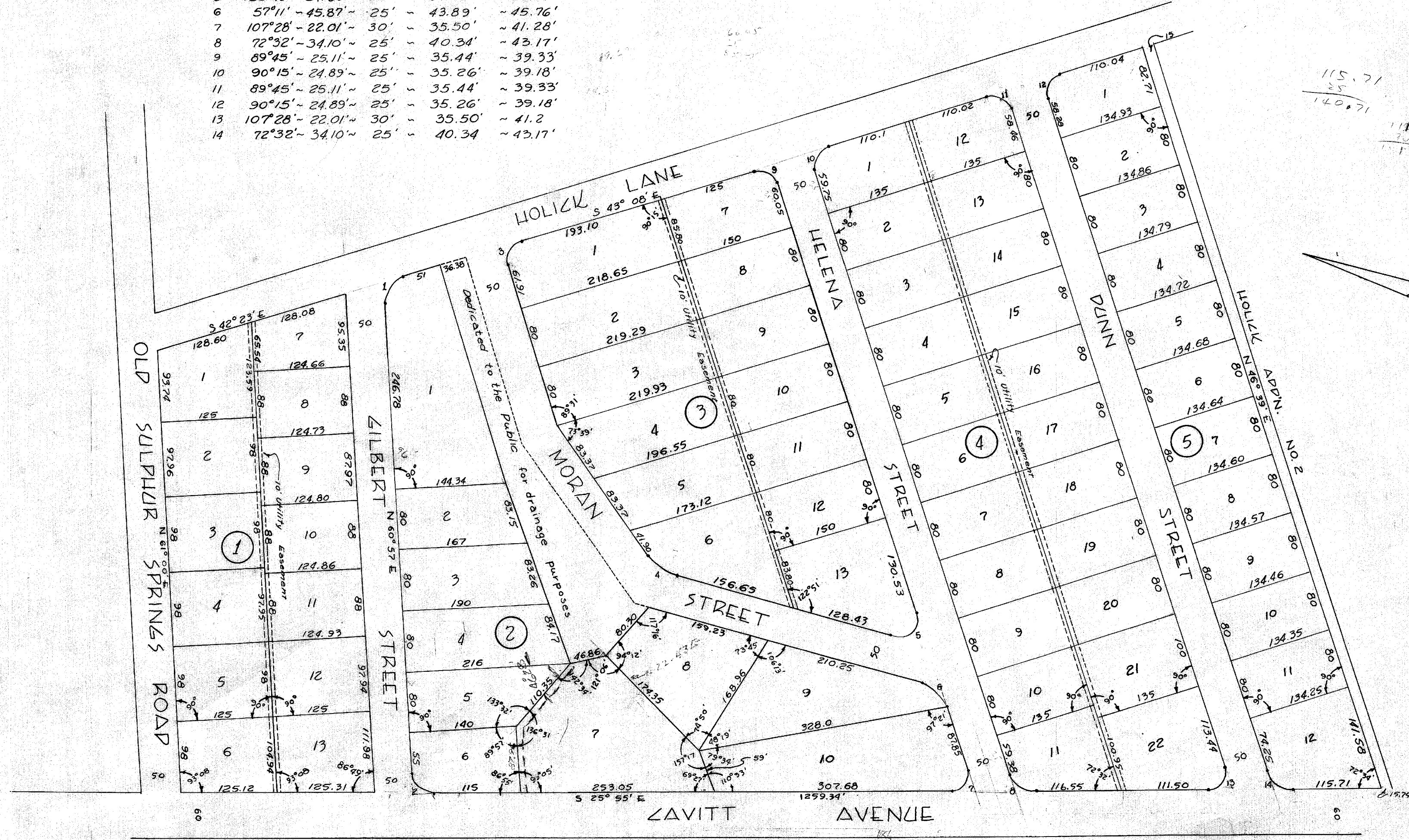
176.35
59
235.35

115.71
25
140.71

118.5
20
141.5

42.07
44.39
9.32

on balance on survey



HOLICK III
10/1/51